

12. With hindsight, what does the Group think has been the greatest benefit from being part of WMS?
13. With hindsight, are there ways in which the WMS Programme could have been more helpful for the Group?
14. What help can WMS Staff offer to help the parish to continue its development of collaborative ministry?
15. Where does the Group hope to go from here?
16. Are there any other comments the Group would like to make at this stage?



# Wakefield Ministry Scheme



## CORE Group follow-up Review

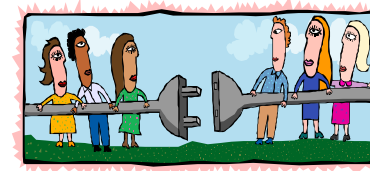
Questionnaire for Guidance of Reviewers

*This questionnaire is for the guidance of WMS Area Representatives and others who may be conducting a follow-up Review of the life of the Core Group in a WMS Commissioned Parish at a point one year or more beyond completion of the Basic Parish Programme. It is recommended that the Reviewer use the leaflet as a guide during the review session, rather than asking the Core Group to fill out the questionnaire beforehand.*



1. How long is it since the church joined the WMS and started the Basic Parish Programme?
2. Is the present Group still the 'Core Group' or has it now changed into something else?
3. How many members were there in the original Core Group?
4. How many of the original members are still in the Group?
5. How many new members have joined?
6. How often did the original Group tend to meet?
7. How often does the Group meet now?

8. How would the Group describe its current role within the parish?
9. Have any members of the Group gone on to further individual training, e.g.
  - Reader
  - Bishop's Certificate in Pastoral Ministry
  - Ordained Local Ministry
  - Other category of Ordained Ministry
  - Something else?



10. Has the Group offered any home-grown training within the parish, and if so in what areas?
11. Does the Group have a need for further training and development to refresh its life, and if so in what areas?